

PV PROTEC C(R) 40



- **Category IEC / EN:** Class II / Type 2
- **Location of use:** Photovoltaic systems - PV module side
- **Protection modes:** (+) → PE, (-) → PE, (+) → (-)
- **Protective element:** MOV
- **Surge discharge rating:** $I_{max} = 40kA$
- **Housing:** Modular design
- **Complies with:** EN 50539-11:2013



Technical data

Type	PV PROTEC C(R) 40/xxxx	
	600	1000

● Electrical characteristics

Max. continuous operating voltage (DC)	U_{CPV} (+)→PE/(-)→PE	600V	1000V
	U_{CPV} per module	300V	500V
Nominal discharge current (8/20)	I_n	20kA per pole	
Max. discharge current (8/20)	I_{max}	40kA per pole	
Protection level	U_p	< 3.0kV	< 3.6kV
Residual voltage at 5kA (8/20)	I_{SCPV}	< 2.2kV	< 3.0kV
Short-circuit current rating	U_{res}	100A	
Response time	t_A	< 25ns	
Thermal protection		YES	
Number of ports		1	

● Mechanical characteristics

Temperature range	T_a	- 40°C + 70°C	
Permissible humidity	RH	5%...95%	
Terminal screw torque	M_{max}	max. 3.0Nm	
Conductor cross section		35mm ² (solid) / 25mm ² (stranded)	
AWG conductor cross section		2 AWG (solid) / 3 AWG (stranded)	
Altitude		2.000m	
Mounting		35mm DIN rail, EN 60715	
Degree of protection		IP 20	
Housing material		thermoplastic; extinguishing degree UL 94 V-0	
Indication of disconnecter operation		red flag	
Remote contacts (RC)		YES	
Contact ratings		AC: 250V/0.5A; 125V/3A	
Terminal cross section		max. 1.5mm ²	
Remote terminal torque		0.25Nm	

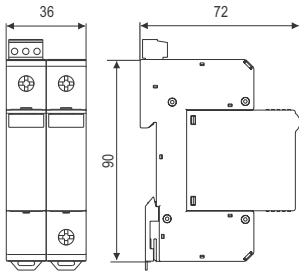
Ordering information

U_{CPV}	600	1000
Ordering code PV PROTEC C 40/xxxx	501.769	501.770
Ordering code PV PROTEC CR 40/xxxx (with remote contacts)	501.771	501.772
Ordering code Module PV PROTEC C(R) 40/xxxx	501.775	501.776

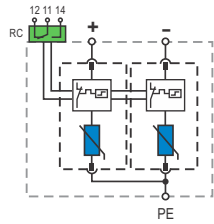
Dimensions, Internal configuration, Weight, Packaging

PV PROTEC C(R) 40/xxxx

Dimensions

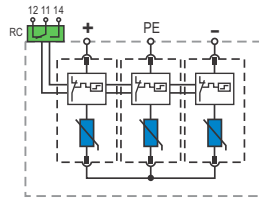
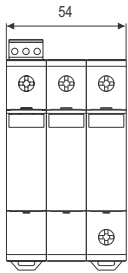


Internal configuration



Dimensions, weight and packaging

PV PROTEC C 40/xxx	100	550
Dimensions DIN 43880	2TE	
Weight per unit	274g	302g
PV PROTEC CR 40/xxx	100	550
Dimensions DIN 43880	2TE	
Weight per unit	279g	307g
Packaging dimensions (single unit)	109 x 76.5 x 41.5mm	
Min. packaging quantity	7 pcs.	

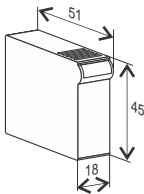


Dimensions, weight and packaging

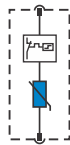
PV PROTEC C 40/xxxx	600	1000
Dimensions DIN 43880	3TE	
Weight per unit	329g	398g
PV PROTEC CR 40/xxxx	600	1000
Dimensions DIN 43880	3TE	
Weight per unit	334g	403g
Packaging dimensions (single unit)	109 x 76.5 x 61.5mm	
Min. packaging quantity	5 pcs.	

Module PV PROTEC C(R) 40/xxxx

Dimensions



Internal configuration

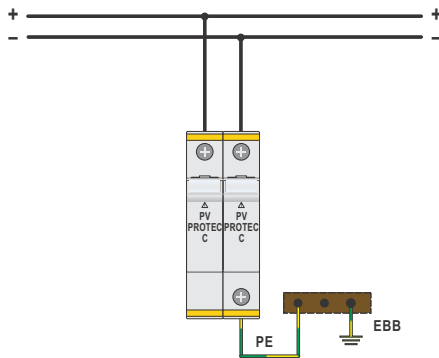


Dimensions, weight and packaging

Module PV PROTEC C(R) 40/xxxx	100	550	600	1000
Weight per unit	46g	58g	52g	58g
Packaging dimensions	221 x 64.5 x 48.5mm			
Min. packaging quantity	12 pcs.			

Network connections

PV PROTEC C(R) 40/100, 40/550



PV PROTEC C(R) 40/600, 40/1000

